



***PC Viewer
User Manual
Version ex 1.0.0***

September, 2007

All rights reserved by Vineyard Technologies, Inc.

Contents

- 1. Introduction** 3
- 2. System Requirement** 3
- 3. Installation of the PC Viewer** 3
 - A. Create Folder for the PC Viewer 3
 - B. Copy the PC Viewer execution file 3
 - C. Change the PC Viewer’s compatibility level 3
- 4. Running the PC Viewer** 5
 - B. Connecting storage devices 5
 - C. Running the application 5
- 5. Operation Mode** 7
 - A. Types of operation modes 7
 - B. Switching operation mode 7
- 6. Common Functions** 8
 - A. “Screen Size Setting” and “Always Top Window Setting” 8
 - B. Playback Control 8
 - C. Audio Control 9
 - D. Capture (BMP and AVI) 10
 - E. Preferences 12
- 7. HDD Viewer Mode Functions** 14
 - A. Change Storage Device 14
 - B. Event List Display 14
- 8. MCG File Viewer Mode Functions** 16
- 9. Troubleshooting** 17

1. Introduction

The PC Viewer is a Windows application that displays the AV (audio/video) stream from a Vineyard DVR System (a DVR system based on Vineyard's security DVR chipset). It can playback the audio/video stream from a Vineyard Storage Device (hard disk or CF card), and can also play the MCG file (the audio/video stream backup file generated by the Vineyard DVR System). Using this application, the user can browse the recorded audio/video stream, capture screenshots as a BMP file, or capture stream as an AVI file.

2. System Requirement

- A. OS: Windows 2000/2003/XP/Vista
- B. CPU: The higher, the better
- C. Main Memory: 512 MByte or higher

3. Installation of the PC Viewer

It should be noted that the user must have administrator permission to run the application. Otherwise, the user will see an error message that says "No Vineyard Storage Device was detected".

- A. Create Folder for the PC Viewer
 - Create a folder for the PC viewer (ie. C:\PC_Viewer).
- B. Copy the PC Viewer execution file
 - PCViewer_ex100.exe to the folder just created.
 - Create a shortcut and copy it to this folder.
- C. Change the PC Viewer's compatibility level
[Windows Vista user only]
 - Make sure that the user logged in as 'Administrator' of the system.
 - In Windows Explorer, right-click on the PC Viewer execution file, PCViewer_ex100.exe, and click on 'Properties.' (see below)



- At the 'PCViewer_ex100 Properties' dialogue window, select the 'Compatibility' tab and select the 'Compatibility mode' setting as follows:
 - Check "Run this program in compatibility mode for:"
 - Select "Windows XP (Service Pack 2)" at the combo box below.



4. Running the PC Viewer

A. Before running...

Make sure that the user account is for an 'Administrator.'

B. Connecting storage devices

The PC Viewer can view four Vineyard Storage Devices at once.

- Hard Disk

Connect the Hard Disk which was formatted and recorded by a Vineyard DVR System.

- Connect it to the IDE of the PC, or
- Connect it to the PC using IDE/USB adaptor

- CF Card

Connect the CF Card which was formatted and recorded by a Vineyard DVR System.

- Connect it to the PC using CF card reader.

C. Running the application

- Once the Vineyard Storage Device is (are) connected to the PC, run the PC Viewer application by double clicking the .exe file.



- The application will detect all Vineyard Storage Device(s) connected to the PC and display the video stream on the screen.



- If the application fails to detect any Vineyard Storage Device, it will show the detection error message shown below and will automatically convert the operation mode to MYS file viewer mode and ask the user to select a file to play.



- Note that when the application runs for the first time, it will create an empty folder called "Capture" in the same folder as the execution file. This folder is the default folder for BMP and AVI captures.

5. Operation Mode

A. Types of operation modes

- HDD Viewer

In this mode, the user can play an audio/video stream recorded by the Vineyard DVR System, capture screen as a BMP file, or capture the audio/video stream into an AVI file.

- MYS File Viewer

MYS file is Vineyard's proprietary audio/video stream backup file format. In this mode, the user can play an audio/video stream created by a Vineyard DVR System, capture screenshots as a BMP file, or capture the audio/video stream into an AVI file.

B. Switching operation mode

Click the "Operation Mode Change" button to switch operation modes. The button is located at the bottom-left corner of the application window.



6. Common Functions

Functions described in this section are commonly available regardless of the operation mode.

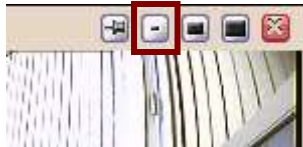
A. "Screen Size Setting" and "Always Top Window Setting"

- Screen Size Setting

The normal screen size is 704x480. If the user wants to make it larger or smaller, the size can be changed to 1056x720 or 352x240.

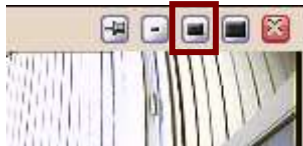
- Set to 50% Screen Size

Click the 50% button or press 'Q' key to change the screen size to 352x240.



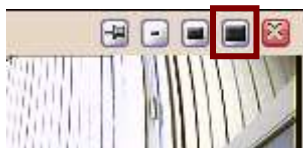
- Set to 100% Screen Size

Click the 100% button or press 'W' key to change the screen size to 704x480.



- Set to 150% Screen Size

Click the 150% button or press 'W' key to change the screen size to 1056x720.



- "Always Top Window" Setting

To set the application window to always be on top of all other windows on the screen, press the "Always top Window" button or press 'T' key to enable or disable this function.



B. Playback Control

- Normal Playback

Press the "Forward Playback" button to start normal playback.



Only in normal playback mode can you hear the audio recording.

- Pause

Press "Pause" button to pause playback.



The user can also use the 'space' key to switch between Normal Playback and Pause.

- Reverse Playback

Press "Reverse Playback" button to play the video stream backward.



Audio playback will be disabled during reverse playback.

- Forward Jump

Press the "Jump Forward 10 sec" or "Jump Forward 60 sec" button to jump forward the desired amount of time.



Jump 10 sec forward



Jump 60 sec forward

- Backward Jump

Press the "Jump Back 10 sec" or "Jump Back 60 sec" button to jump backward the desired amount of time.



Jump 10 sec backward



Jump 60 sec backward

Audio playback will be disabled during reverse playback.

- Jump/Slider

Use the slider to jump anywhere within the recorded stream.



C. Audio Control

- Audio Channel/Track Selection

If the recorded stream includes multiple audio tracks, all available audio tracks will playback simultaneously by default. To change the audio setting, press the "Change Audio Setting" button.



When the button is pressed, the application will display the following dialogue window.



You can mute all audio tracks by enabling the "Mute All Audio Track" button, enable all audio tracks by selecting the "Sound All Audio Track" button, or select one audio channel. Audio channel buttons which are not available will be disabled.

In the picture above, channels 3 through 9 are not available and the buttons are disabled accordingly.

- Volume Control

Use the volume control slider to adjust audio volume.



D. Capture (BMP and AVI)

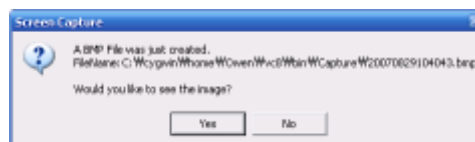
- BMP image capture

Press the "Capture [BMP]" button to save the current screen image into a BMP file.

(Please note that this function will save the screen image 'as is'.)



When a BMP file is created, the application will show the following message box (the file name on the image may differ). Select "Yes" to check the captured image immediately.



- AVI stream capture

Press the "Record" button to save the audio/video stream as an AVI file.

(Please note that this function will save the audio/video screen 'as

is.')



When the button is pressed, the application will show AVI recording setup window to set number of parameters for AVI file creation.



- Video Codec

To create an AVI file, the Video Codec should be selected.

It is HIGHLY recommended that the user install a DivX or Xvid video encoder before running PC Viewer. Those video encoders are available free of charge at:

- DivX Video Encoder

<http://www.divx.com/divx/windows/codec/>

- Xvid Video Encoder

<http://www.xvidmovies.com/codec/>

- Video Frame Rate

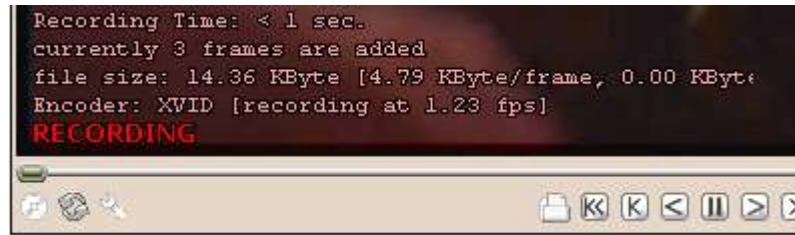
Select frame rate for the AVI file to be created. The maximum frame rate is 30 frames/sec for NTSC, 25 frames/sec for PAL video stream.

- Audio Channel

Select Audio Channel to be added to the AVI file. Only one audio channel can be selected.

No audio channel is selected by default.

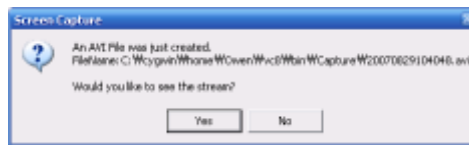
While an AVI file is recording, the AVI file conversion status will be displayed at the right-bottom of the screen.



Also, all buttons except "Record" button will be disabled.

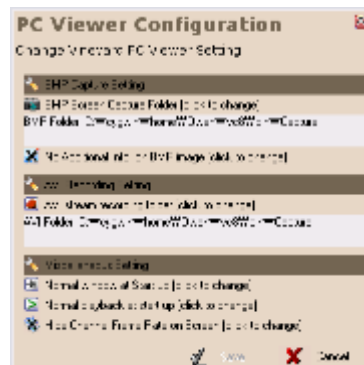
To stop AVI recording, press the "Record" button again.

When a AVI recording is completed (stopped), the application will show a message box like the following (the file name on the image may differ). Select "Yes" to see the captured AVI file immediately.



E. Preferences

Press "Change and Save Application Setting" button to change the application's default setting.



- BMP Capture Setting
 - The user can change BMP screen capture folder
 - The user enable/disable 'info on BMP file' feature.
- AVI Recording Setting
 - The user can change AVI stream capture folder
- Miscellaneous Setting
 - Make the application window 'always on top' window by default.
 - Start normal playback at application start.
 - Display/Hide channel frame rate information on the screen.

7. HDD Viewer Mode Functions

When the application is in "HDD Viewer Mode", the following functions are available.

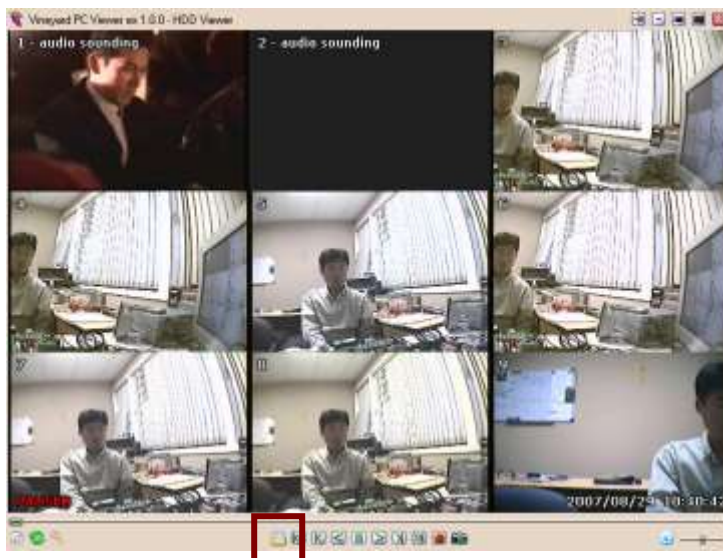
A. Change Storage Device

If there are multiple Vineyard Storage Devices attached to the PC, the user can switch between the devices. Press "Change Storage Device" button to change.



B. Event List Display

To browse and select a recorded event to play, press "Event List" button.



Then "DVR Record Event List" dialog box will pop:



The image above shows the situation that the HDD or CF card has just one record event. If the storage device has multiple events, events are displayed accordingly.

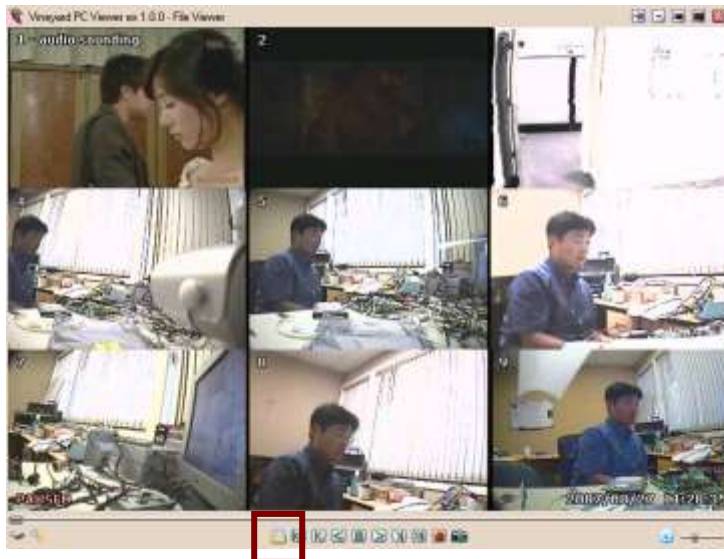
Select event and press "OK" to start the event.

8. MCG File Viewer Mode Functions

When the application is in "MCG Viewer Mode", the following function is available.

A. Select MCG file

Press "Open other MCG file" to open and see another MCG file.



Select an MCG file to play.



9. Troubleshooting

[this section to be completed by the DVR manufacturer]