

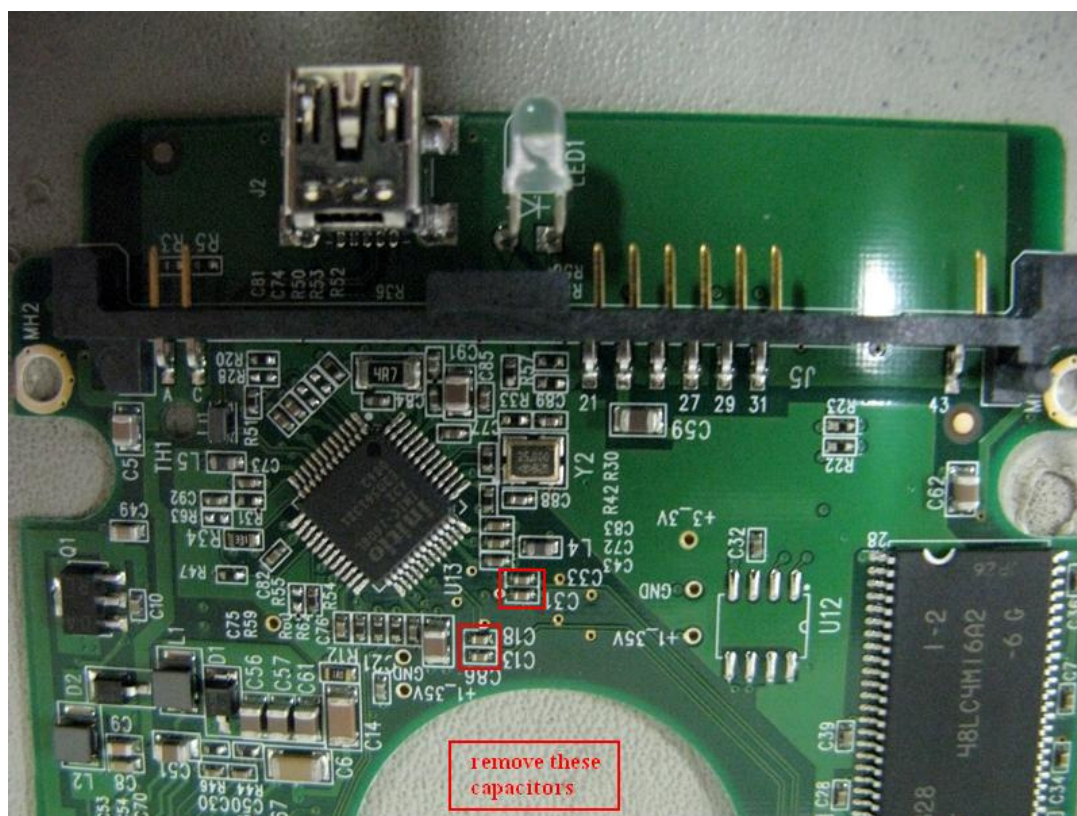
How to connect WD USB interface HDD to HD Doctor

Some clients may concern about how to fix a drive with a USB interface only. It's almost impossible to connect it to the HD doctor console.

Now we get a way to connect the drive to the console. Don't worry that it can't be very difficult to do. It can be done with only a few steps. Follow me.

Step 1

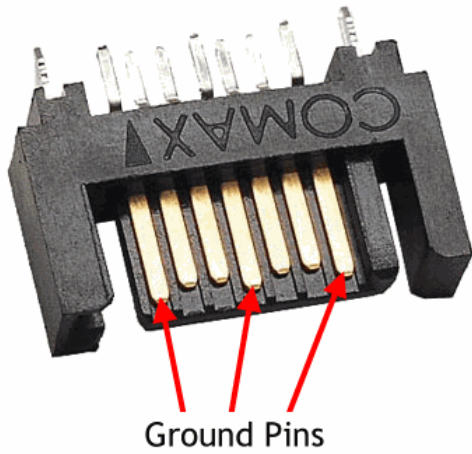
Remove the PCB from the drive.



As shown in the picture above, we need to remove these 4 capacitors from the PCB carefully. It's suggested that you can remove them with a hot air gun.

Step 2

Find a SATA data transfer interface from a SATA drive. You don't need to care about the model number, the firmware version or PCB number. Any hard drive with a SATA interface will do.



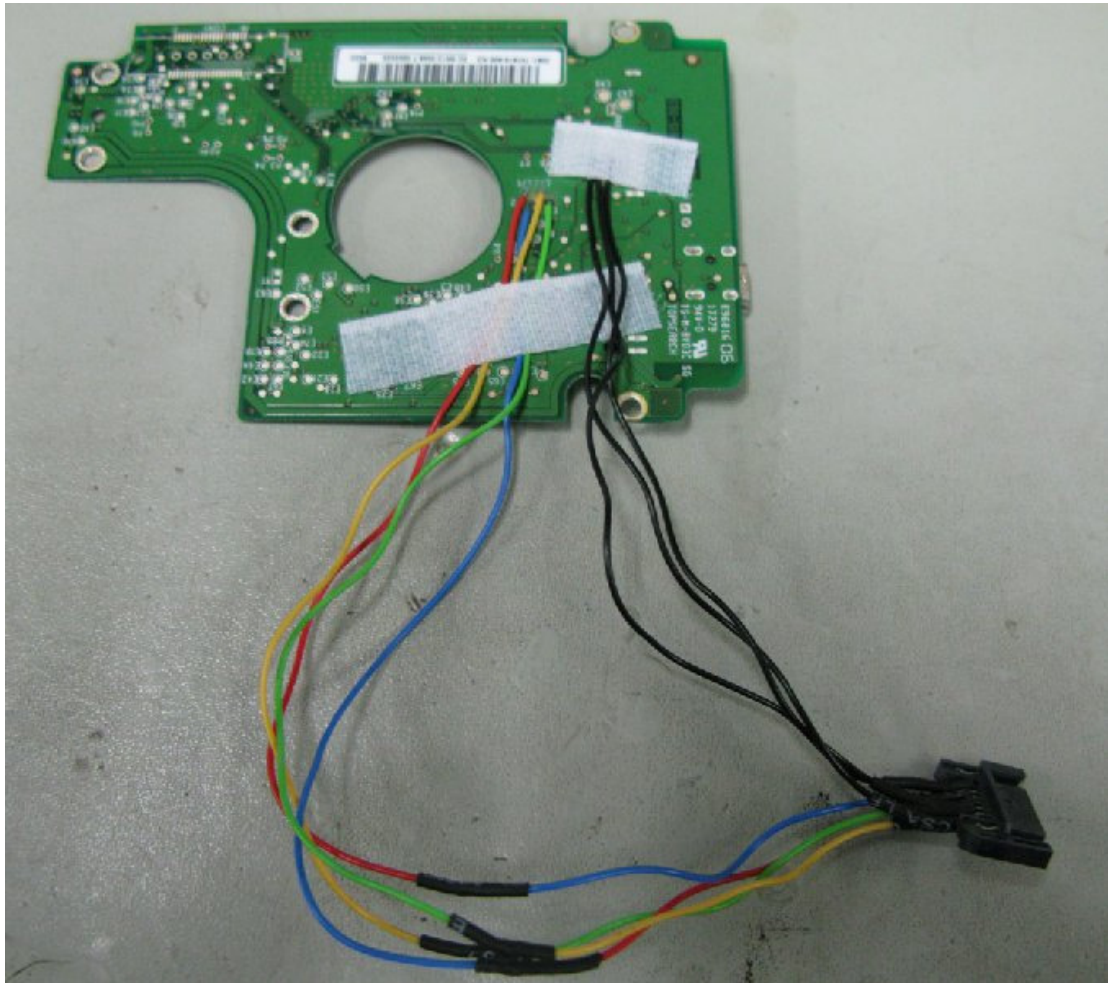
It can be told from the picture that the longest 3 pins are the ground pins, the other four pins belong to SATA data pins. We need to connect them together later.

Step 3



From the back side of the PCB, we can see the pins E71,E72,E73 and E74 belong to SATA data pins. And the other four pins marked with a red square belong to ground pins.

Step 4



Now connect each pin to their corresponding one. Ground pins to ground ones, SATA data pins to SATA data ones.

After that, you can connect the SATA interface to SATA to IDE adaptor, and then the data can be transfer correctly.

Last but not the least

The USB interface also needs to be connected to your PC as the power supply. Otherwise the drive will not spin at all.

Now we can diagnosis and fix the drive as the usual ones.

Enjoy.