

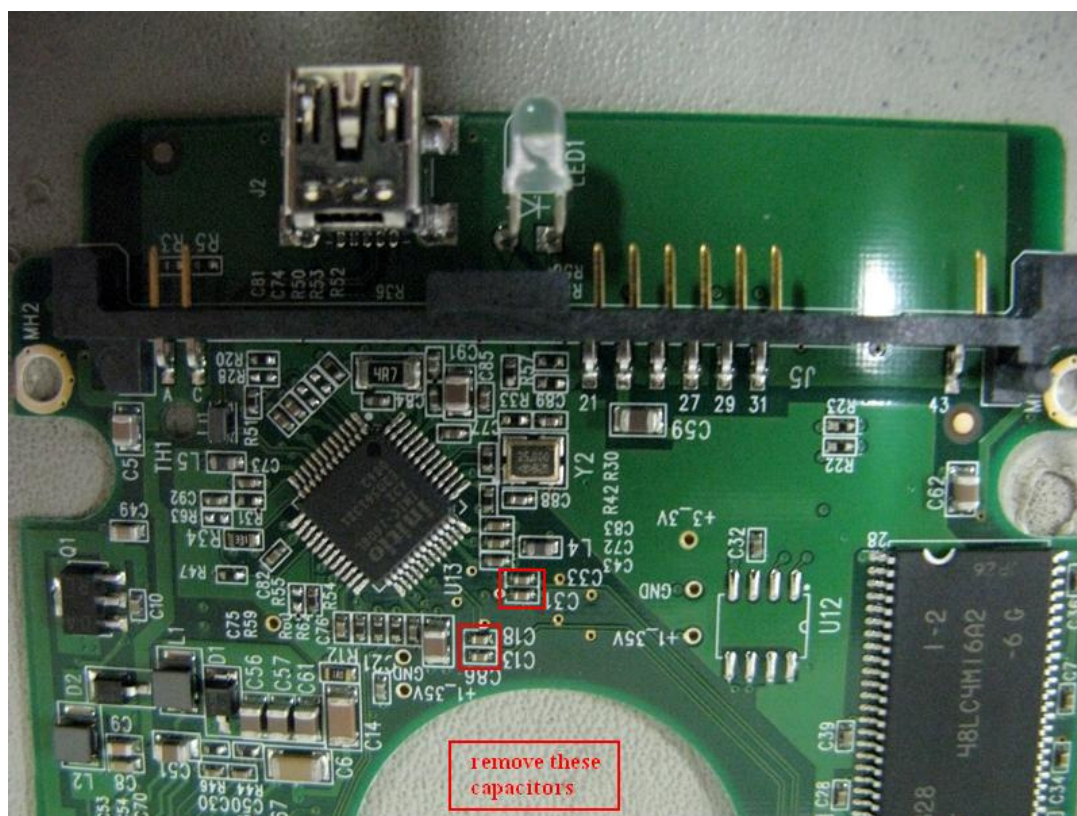
## How to connect WD USB interface HDD to HD Doctor

Some clients may concern about how to fix a drive with a USB interface only, because WD drive with USB interface cannot be directly connected with HD doctor.

Now we get a way to connect the drive to the console. It can be done with only a few steps..

### Step 1

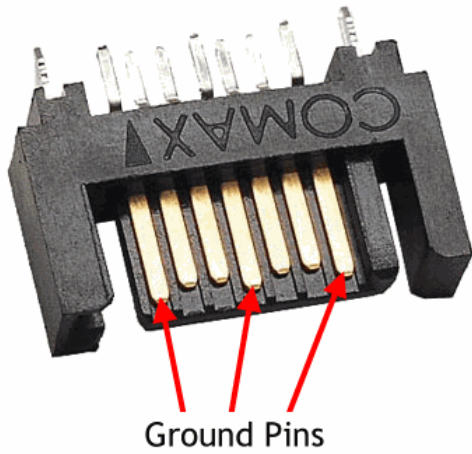
Remove the PCB from the drive.



As shown in the picture above, we need to remove these 4 capacitors from the PCB carefully. It's suggested that you can remove them with a hot air gun.

### Step 2

Find a SATA data transfer interface from a SATA drive. You don't need to care about the model number, the firmware version or PCB number. Any hard drive with a SATA interface will do.



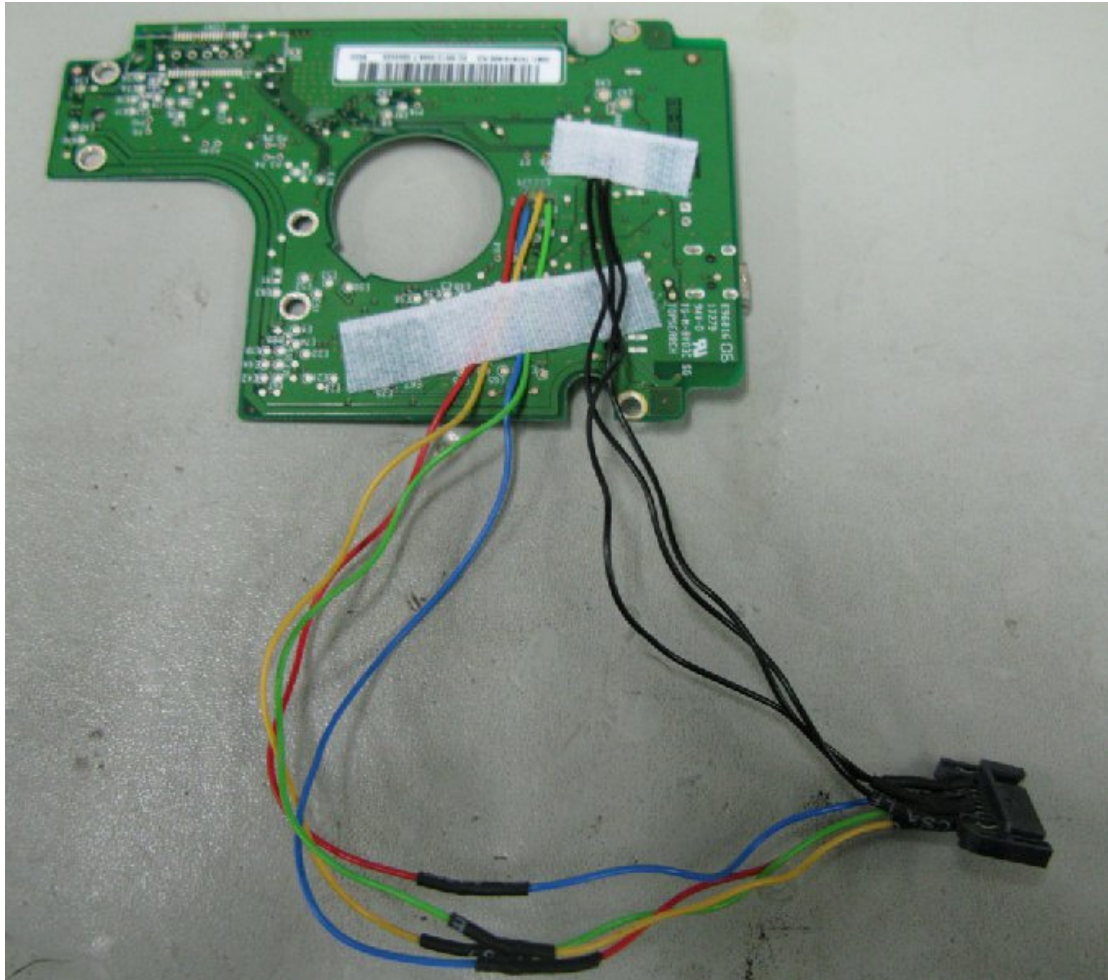
It can be told from the picture that the longest 3 pins are the ground pins, the other four pins belong to SATA data pins. We need to connect them together later.

### Step 3



From the back side of the PCB, we can see that the pins E71, E72, E73 and E74 belong to SATA data pins. And the other four pins marked with a red square belong to ground pins.

#### Step 4



Now connect each pin to their corresponding one.

After that, you can connect the SATA interface to SATA-to-IDE adaptor, and then the data can be transferred correctly.